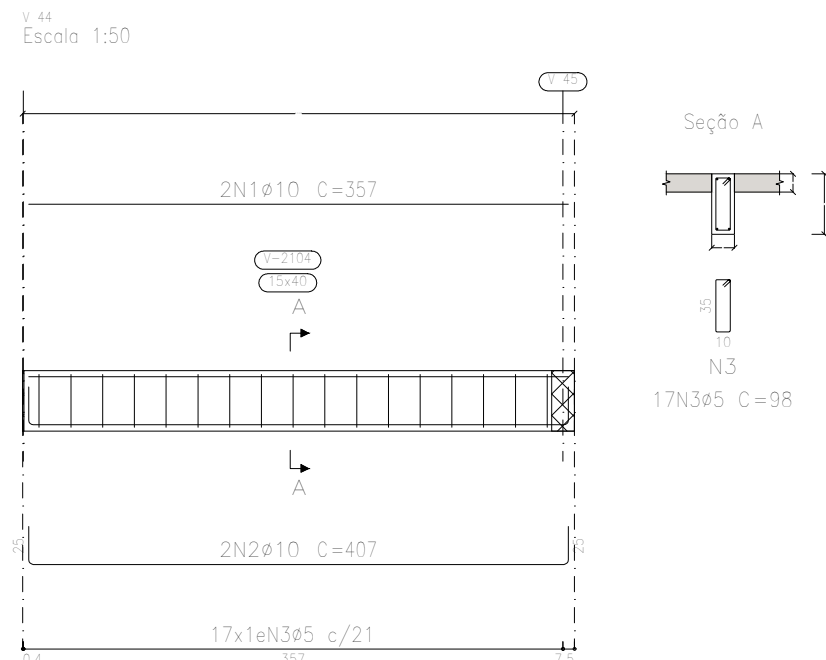
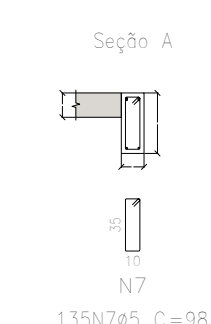
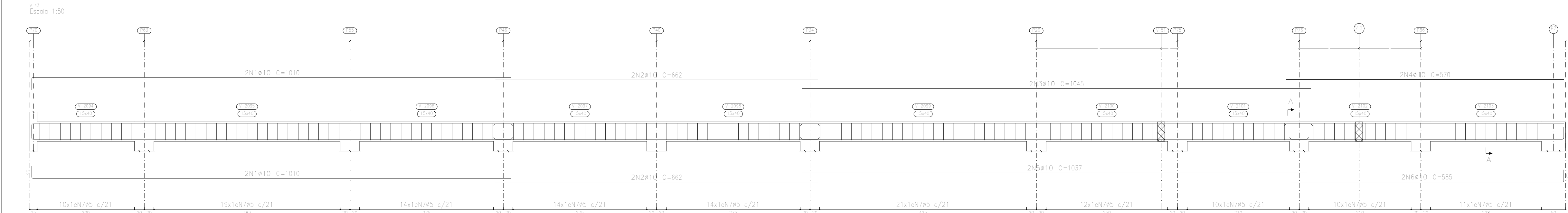
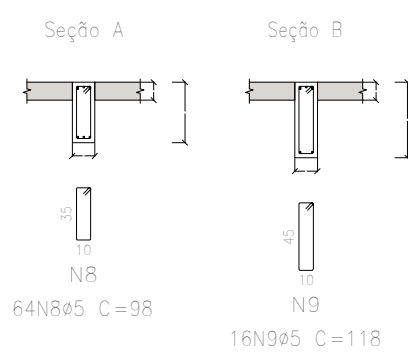
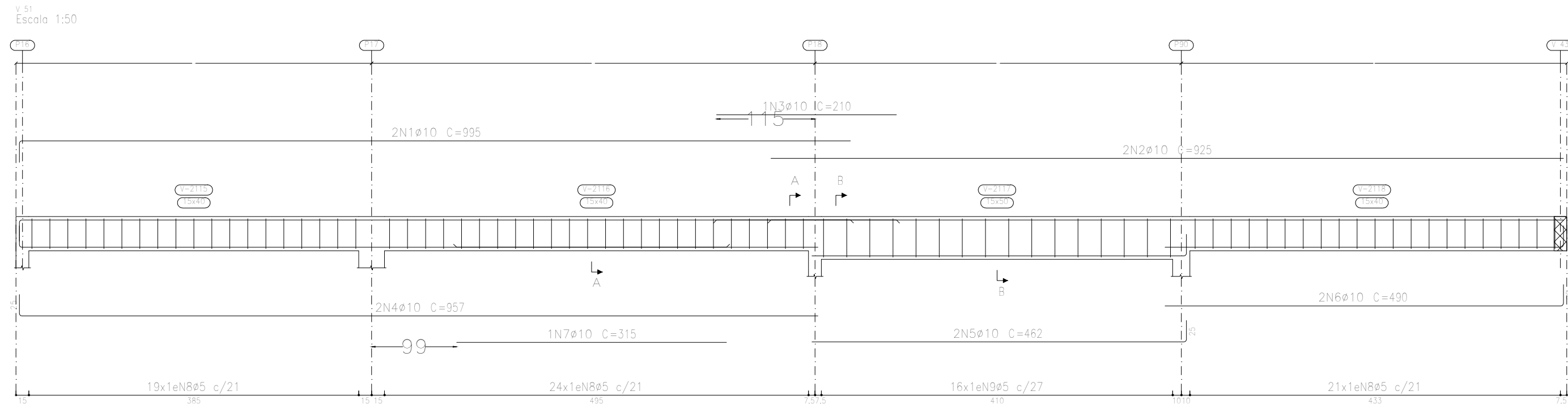
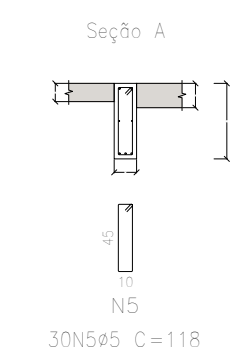
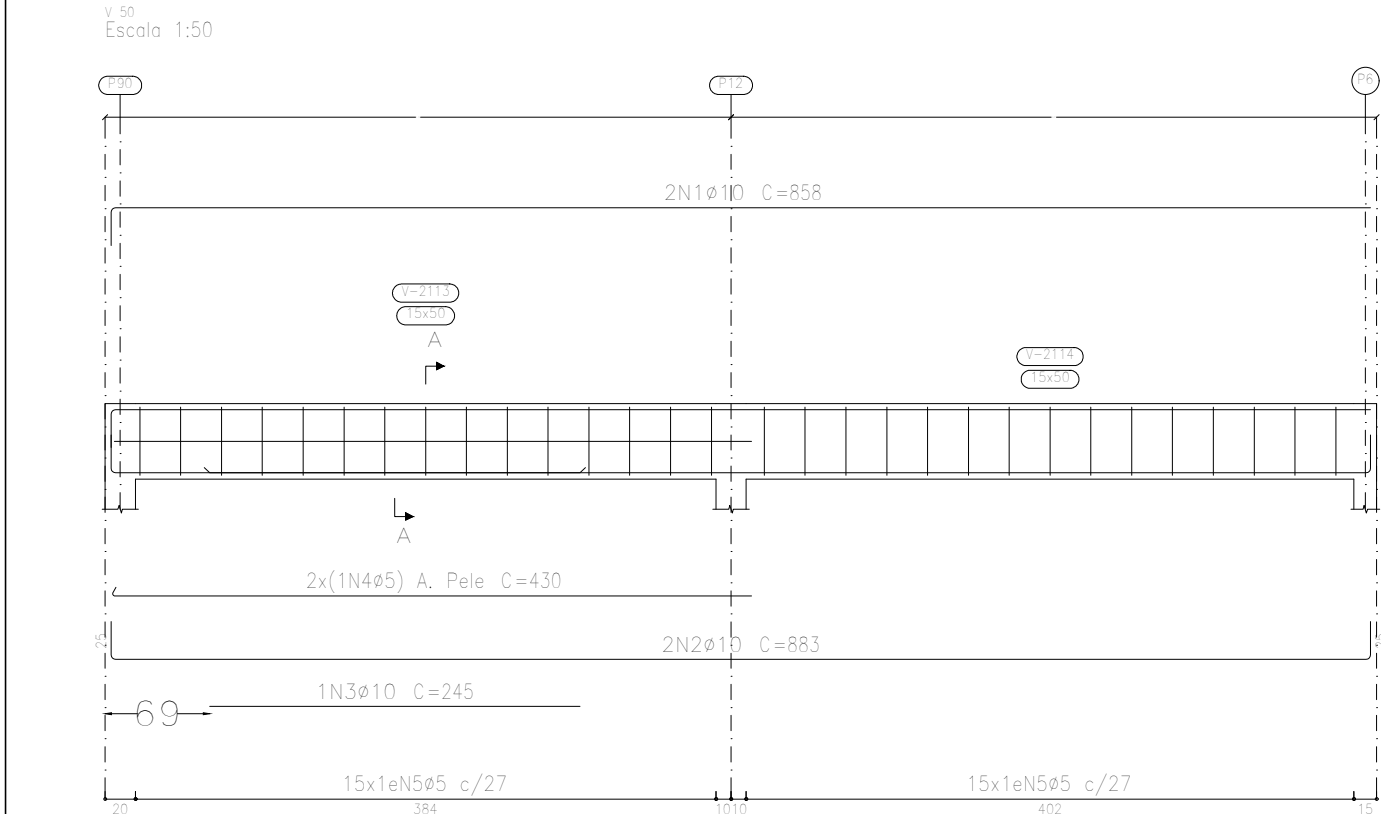
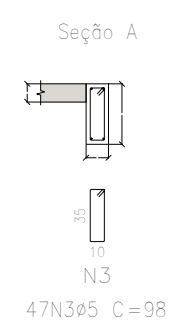
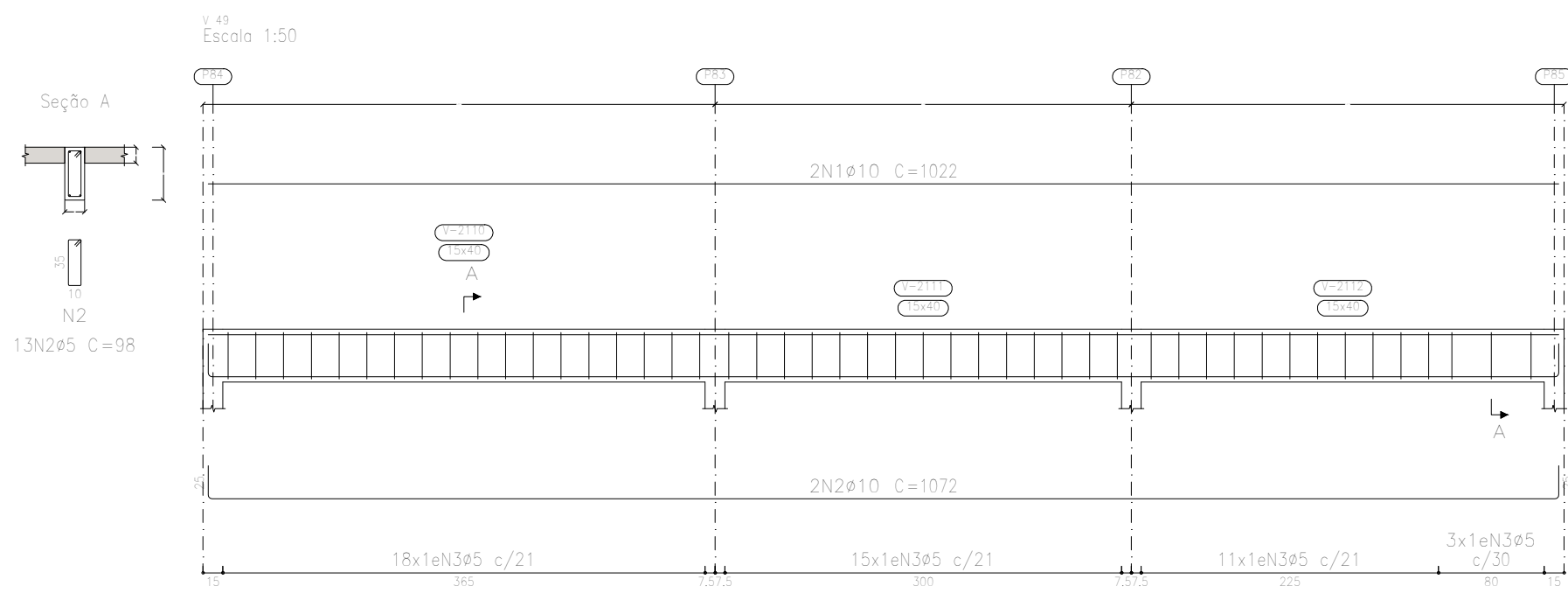
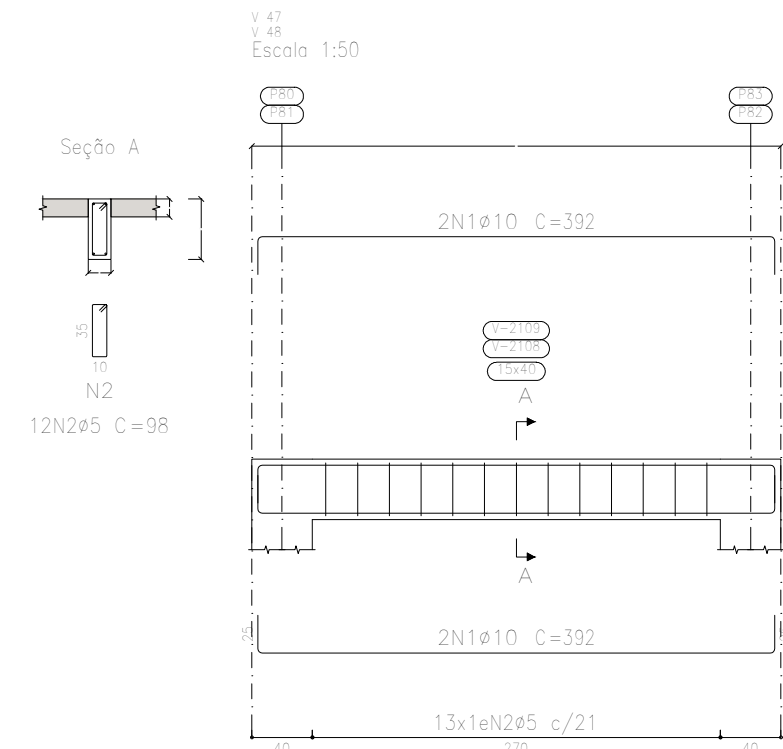
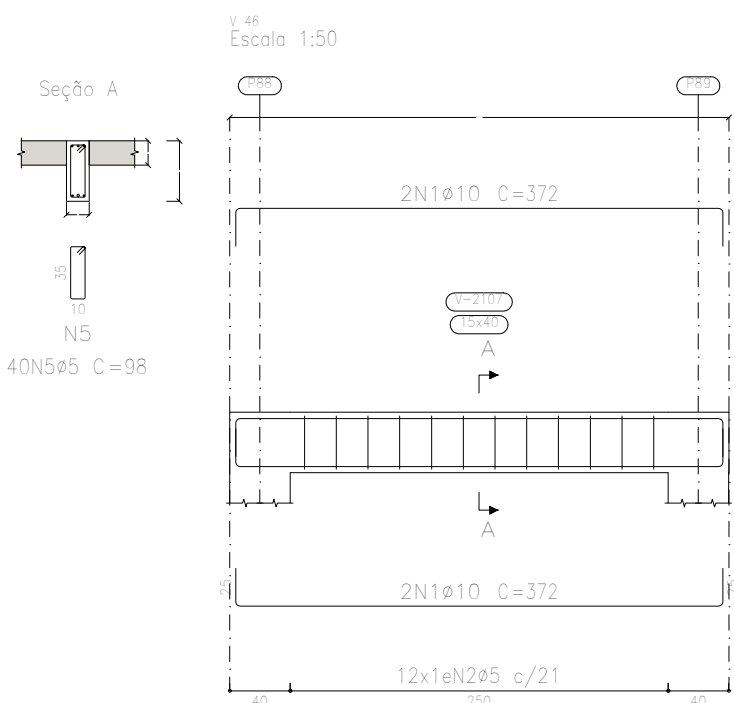
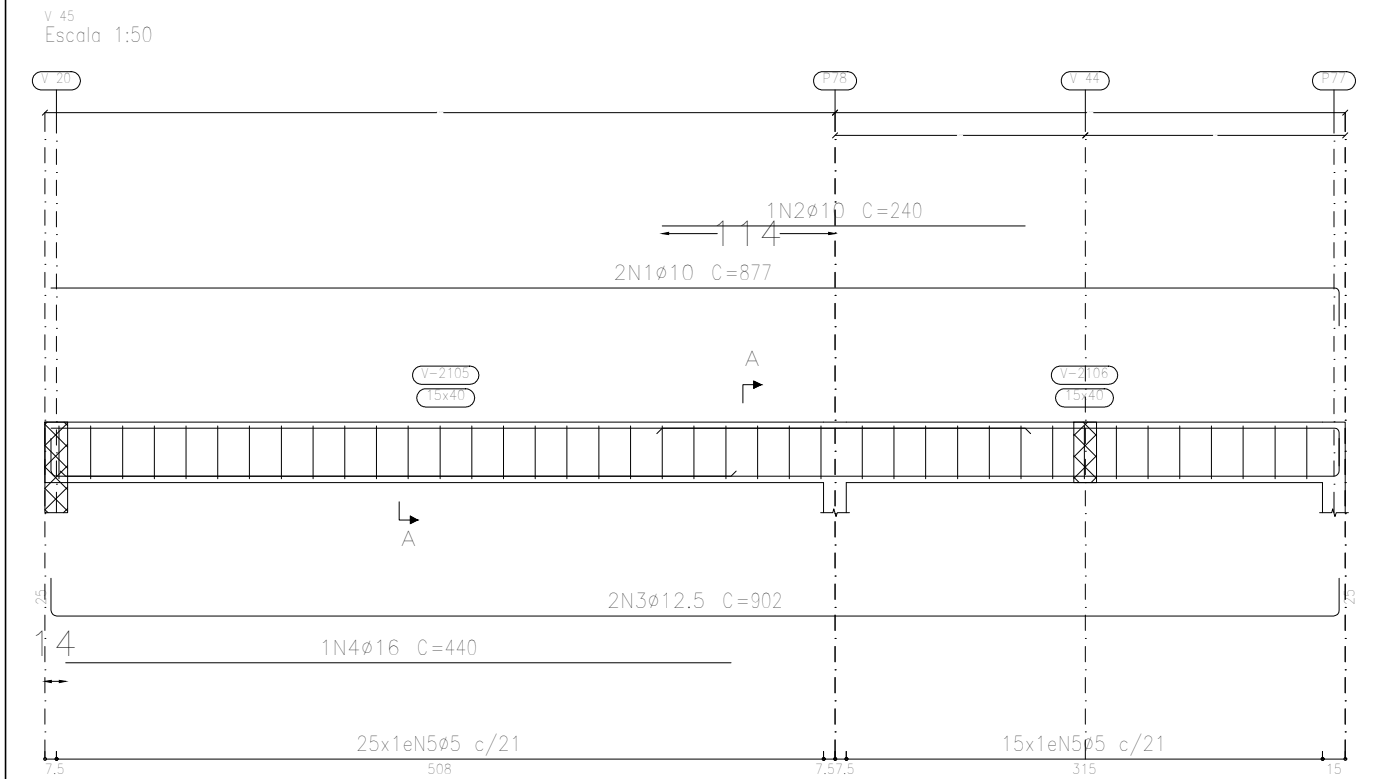


Piso 2
Desenho de vigas
Concreto: C25, em geral
Aço das barras: CA-50 e CA-60
Aço dos estribos: CA-50 e CA-60
Escala vigas 1:50
Escala seções 1:50
Escala aberturas 1:50



Resumo Aço	Comp. total	Peso+10%	Total
Desenho de vigas	(m)	(kg)	
CA-50 ø10	1928.5	1307	1485
ø12,5	104.9	111	
ø16	34.2	59	
ø20	2.9	8	
CA-60 ø5	2026.2	350	350
Total			1835

Elemento	Pos.	Diam.	Q.	Esquema (cm)	Comp. (cm)	Total (cm)	CA-50 (kg)	CA-60 (kg)
V 42	1	ø10	2		850	1700	10.5	
	2	ø10	2		1060	2120	13.1	
	3	ø10	2		985	1970	12.1	
	4	ø10	2		450	900	5.5	
	5	ø10	1		250	250	1.5	
	6	ø10	2		812	1624	10.0	
	7	ø10	2		973	1946	12.0	
	8	ø10	2		462	924	5.7	
	9	ø12,5	1		380	380	3.7	
	10	ø12,5	1		98	13916		21.8
	11	ø5	142					
Total+10%:							95.4	24.0
V 43	1	ø10	4		877	1754	10.8	
	2	ø10	4		240	240	1.5	
	3	ø10	2		902	1804	12.4	
	4	ø10	2		440	440	6.9	
	5	ø10	2		98	3920		6.2
	6	ø10	2		372	744	4.4	
	7	ø5	135		98	13230		20.8
Total+10%:							89.2	22.9
V 44	1	ø10	2		392	784	4.4	
	2	ø10	2		407	814	5.0	
	3	ø5	17		98	1666		2.6
Total+10%:							10.3	2.9
V 45	1	ø10	2		877	1754	10.8	
	2	ø10	1		240	240	1.5	
	3	ø12,5	2		902	1804	12.4	
	4	ø16	1		440	440	6.9	
	5	ø5	40		98	3920		6.2
Total+10%:							40.3	6.8
V 46	1	ø10	4		372	1488	9.2	
	2	ø5	12		98	1176		1.8
Total+10%:							10.1	2.0
V 47=V 48	1	ø10	4		392	1568	9.7	
	2	ø5	13		98	1274		2.0
Total+10%:							10.7	2.2
V 49	1	ø10	2		1022	2044	12.6	
	2	ø10	2		1072	2144	13.2	
	3	ø5	47		98	4606		7.2
Total+10%:							28.4	7.9
V 50	1	ø10	2		858	1716	10.6	
	2	ø10	2		883	1766	10.9	
	3	ø10	1		245	245	1.5	
	4	ø5	2		430	860		1.4
	5	ø5	30		118	3540		5.6
Total+10%:							25.3	7.7
V 51	1	ø10	2		995	1990	12.3	
	2	ø10	2		925	1850	11.4	
	3	ø10	1		210	210	1.3	
	4	ø10	2		957	1914	11.8	
	5	ø10	2		462	924	5.7	
	6	ø10	2		490	980	6.0	
	7	ø10	1		315	315	1.9	
	8	ø5	84		98	6272		9.8
	9	ø5	16		118	1888		3.0
Total+10%:							55.4	14.1
				ø5:	0.0	92.7		
				ø10:	344.9	0.0		
				ø12,5:	23.3	0.0		
				ø16:	7.6	0.0		
				Total:	375.8	92.7		

Unidade de Reabilitação	Data:
Local:	10/10/2024
Unidade de Reabilitação	Número de desenho:
Promotor:	
Prefeitura Municipal de Campos de Jólí	
Projeto Estrutural	Escola:
	Indicada
Eduardo Rompanelli Tosetto Engenheiro Civil Número do CREA: 1220503037	Data:
	10/10/2024